

Sealing boots

UG1410-A-R1

- Prevent dust, sand and water from getting into switches.
- On toggle versions, also prevent ice from blocking lever action
- Compatible with frontal sealing options (K and X408).
- Available in a wide range of colours.
- When necessary, a sealing ring or washer is supplied with the boot.



MATERIALS AND SPECIFICATIONS

- Boot material : neoprene or silicone (see comparative advantages below)
- Nut material : brass, nickel plated or black
- Operating temperature :
 - neoprene boots : -20°C to +50°C
 - silicone boots : -40°C to + 85°C

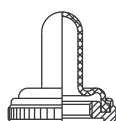
++ : excellent, + : good, - : poor

COMPARATIVE ADVANTAGES	TEMPERATURE RANGE		ELASTICITY	MECHANICAL RESISTANCE
	LOW	HIGH		
Silicone	++	++	++	-
Neoprene	-	+	-	++

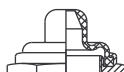
DIFFERENT TYPES OF BOOTS

* Colour options available

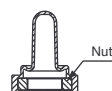
Full-toggle (standard) *



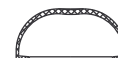
Half-toggle *



Two-part
(no metal parts accessible) *



For double sealing



По вопросам продаж и поддержки обращайтесь:

Архангельск (8182)63-90-72
Астана (7172)727-132
Астрахань (8512)99-46-04
Барнаул (3852)73-04-60
Белгород (4722)40-23-64
Брянск (4832)59-03-52
Владивосток (423)249-28-31
Волгоград (844)278-03-48
Вологда (8172)26-41-59
Воронеж (473)204-51-73
Екатеринбург (343)384-55-89

Иваново (4932)77-34-06
Ижевск (3412)26-03-58
Казань (843)206-01-48
Калининград (4012)72-03-81
Калуга (4842)92-23-67
Кемерово (3842)65-04-62
Киров (8332)68-02-04
Краснодар (861)203-40-90
Красноярск (391)204-63-61
Курск (4712)77-13-04
Липецк (4742)52-20-81

Магнитогорск (3519)55-03-13
Москва (495)268-04-70
Мурманск (8152)59-64-93
Набережные Челны (8552)20-53-41
Нижний Новгород (831)429-08-12
Новокузнецк (3843)20-46-81
Новосибирск (383)227-86-73
Омск (3812)21-46-40
Орел (4862)44-53-42
Оренбург (3532)37-68-04
Пенза (8412)22-31-16

Пермь (342)205-81-47
Ростов-на-Дону (863)308-18-15
Рязань (4912)46-61-64
Самара (846)206-03-16
Санкт-Петербург (812)309-46-40
Саратов (845)249-38-78
Севастополь (8692)22-31-93
Симферополь (3652)67-13-56
Смоленск (4812)29-41-54
Сочи (862)225-72-31
Ставрополь (8652)20-65-13

Сургут (3462)77-98-35
Тверь (4822)63-31-35
Томск (3822)98-41-53
Тула (4872)74-02-29
Тюмень (3452)66-21-18
Ульяновск (8422)24-23-59
Уфа (347)229-48-12
Хабаровск (4212)92-98-04
Челябинск (351)202-03-61
Череповец (8202)49-02-64
Ярославль (4852)69-52-93

Единый адрес: amn@nt-rt.ru | <http://apem.nt-rt.ru>

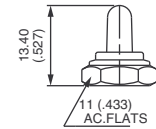
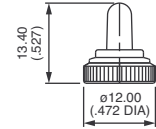
Sealing boots

For toggle switches

For bushing $\varnothing 6 \times 0.75$ (.236 x 0.75) - 5500 series



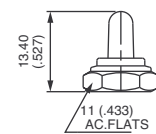
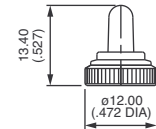
NUT	FULL-TOGGLE SILICONE BOOTS			
	Black	Red	Green	White
Knurled Nickel plated	N32161005 (U1341)	N32162005 (U1341-6)	N3216V005 (U1341-3)	N3216B005 (U1341-7)
Knurled Black	N32161002 (U1343)	N32162002 (U1343-6)	N3216V002 (U1343-3)	N3216B002 (U1343-7)
Hex Nickel plated	N32121005 (U1302)	N32122005 (U1302-6)	N3212V005 (U1302-3)	N3212B005 (U1302-7)
Hex Black	N32121002 (U1304)	N32122002 (U1304-6)	N3212V002 (U1304-3)	N3212B002 (U1304-7)



For bushing $\varnothing 6,35-40NS$ (1/4-40UNS) - 5000 and 11000 series



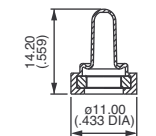
NUT	FULL-TOGGLE SILICONE BOOTS			
	Black	Red	Green	White
Knurled Nickel plated	N33161005 (U1331)	N33162005 (U1331-6)	N3316V005 (U1331-3)	N3316B005 (U1331-7)
Knurled Black	N33161002 (U1333)	N33162002 (U1333-6)	N3316V002 (U1333-3)	N3316B002 (U1333-7)
Hex Nickel plated	N33121005 (U1229)	N33122005 (U1229-6)	N3312V005 (U1229-3)	N3312B005 (U1229-7)
Hex Black	N33121002 (U1231)	N33122002 (U1231-6)	N3312V002 (U1231-3)	N3312B002 (U1231-7)



For bushing $\varnothing 6,35-40NS$ (1/4-40UNS) - 5000 and 11000 series



BOOTS SUPPLIED AS 2 SEPARATE PARTS				
NEOPRENE	SILICONE			
Black	Red	Green	White	
N33136119 (U5149)	N33137119 (U5149-6)	N3313V119 (U5149-3)	N3313B119 (U5149-7)	

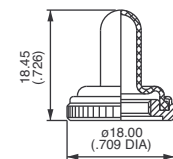


Once the boot is mounted onto the panel, no switch metal part is accessible any more.

For bushing $\varnothing 10 \times 0.75$ (.393 x 0.75) - 10600 series



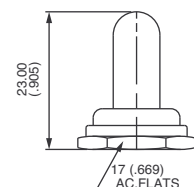
KNURLED NUT	FULL-TOGGLE SILICONE BOOTS			
	Black	Red	Green	White
Nickel plated	N34151005 (U1612)	N34152005 (U1612-6)	N3415V005 (U1612-3)	N3415B005 (U1612-7)
Black	N34151002 (U1614)	N34152002 (U1614-6)	N3415V002 (U1614-3)	N3415B002 (U1614-7)



For bushing $\varnothing 11,9-32 NS$ (15/32-32NS) - 12000, 5000M, 3500 and 6000 series



HEX NUT	FULL-TOGGLE SILICONE BOOTS			
	Black	Red	Green	White
Nickel plated	N35111005 (U1031)	N35112005 (U1031-6)	N3511V005 (U1031-3)	N3511B005 (U1031-7)
Black	N35111002 (U1024)	N35112002 (U1024-6)	N3511V002 (U1024-3)	-



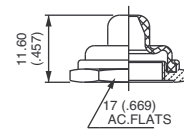
Sealing boots

For toggle switches

For bushing \varnothing 11,9-32 NS (15/32-32NS) - 12000, 3500 and 6000 series



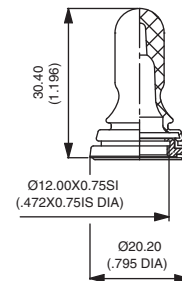
HEX NUT	HALF-TOGGLE SILICONE BOOTS			
	Black	Red	Green	White
Nickel plated	N35111015 (U1600)	N35112015 (U1600-6)	N3511V015 (U1600-3)	N3511B015 (U1600-7)
Black	N35111012 (U1602)	N35112012 (U1602-6)	N3511V012 (U1602-3)	-



For bushing \varnothing 12 x 0.75 SI (.472x.075 IS) - 12000, 3500, 3600 and 600 series



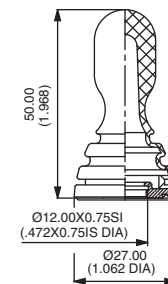
FULL-TOGGLE BLACK NEOPRENE BOOT
N36346009 (U2252)



For bushing \varnothing 12 x 0.75 SI (.472x.075 IS) - 600 series with -5 long lever



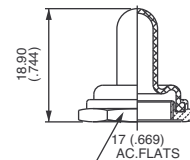
FULL-TOGGLE BLACK NEOPRENE BOOT
N36346209 (U2197)



For bushing \varnothing 12 x 0.75 SI (.472x.075 IS) - 4450, 4650 and 1600 series



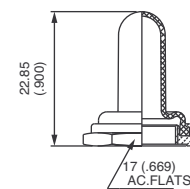
HEX NUT	FULL-TOGGLE BLACK NEOPRENE BOOTS	
Nickel plated	N36116045	(U09)
Black	N36116042	(U223)



For bushing \varnothing 12 x 0.75 SI (.472x.075 IS) - 600H, 660, 1000, 1500 and 3600



HEX NUT	FULL-TOGGLE SILICONE BOOTS			
	Black	Red	Green	White
Nickel plated	N36111005 (U1565)	N36112005 (U1565-6)	N3611V005 (U1565-3)	N3611B005 (U1565-7)
Black	N36111002 (U1567)	N36112002 (U1567-6)	N3611V002 (U1567-3)	-
FULL-TOGGLE BLACK NEOPRENE BOOTS				
Nickel plated	N36116005		(U851)	
Black	N36116002		(U853)	



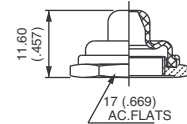
Sealing boots

For toggle switches or pushbutton switches

For bushing $\varnothing 12 \times 0.75$ SI (.472x.075 IS) - 600H, 660, 1000 and 3600 series



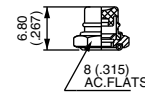
HEX NUT	HALF-TOGGLE SILICONE BOOTS			
	Black	Red	Green	White
Nickel plated	N36111015 (U1151)	N36112015 (U1151-6)	N3611V015 (U1151-3)	N3611B015 (U1151-7)
Black	N36111012 (U1153)	N36112012 (U1153-6)	N3611V012 (U1153-3)	-
HALF-TOGGLE BLACK NEOPRENE BOOTS				
Nickel plated	N36116015		(U598)	
Black	N36116012		(U600)	



For bushing $\varnothing 4 \times 0.70$ (.157 x 0.70) - 9500 series



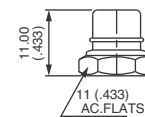
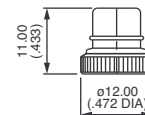
HEX NUT	PUSHBUTTON SILICONE BOOTS			
	Black	Red	Green	White
Nickel plated	N31221005 (U1829)	N31222005 (U1829-6)	N3122V005 (U1829-3)	N3122B005 (U1829-7)
Black	N31221002 (U1831)	N31222002 (U1831-6)	N3122V002 (U1831-3)	N3122B002 (U1831-7)



For bushing $\varnothing 6,35-40$ NS (1/4-40UNS) - 18000, 9000 and 13000 series



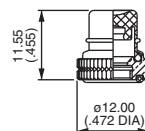
NUT	PUSHBUTTON SILICONE BOOTS			
	Black	Red	Green	White
Knurled Nickel plated	N33261005 (U1401)	N33262005 (U1401-6)	N3326V005 (U1401-3)	N3326B005 (U1401-7)
Knurled Black	N33261002 (U1403)	N33262002 (U1403-6)	N3326V002 (U1403-3)	N3326B002 (U1403-7)
Hex Nickel plated	N33221005 (U1318)	N33222005 (U1318-6)	N3322V005 (U1318-3)	N3322B005 (U1318-7)
Hex Black	N33221002 (U1320)	N33222002 (U1320-6)	N3322V002 (U1320-3)	N3322B002 (U1320-7)



For bushing $\varnothing 6,35-40$ NS (1/4-40 UNS) - 8000 series



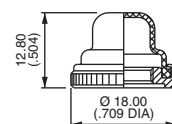
KNURLED NUT	PUSHBUTTON SILICONE BOOTS			
	Black	Red	Green	White
Nickel plated	N33261125 (U4301)	N33262125 (U4301-6)	N3326V125 (U4301-3)	N3326B125 (U4301-7)



For bushing $\varnothing 10 \times 0.75$ (.393 x 0.75) - 10400 series



KNURLED NUT	PUSHBUTTON SILICONE BOOTS			
	Black	Red	Green	White
Nickel plated	N34251005 (U1624)	N34252005 (U1624-6)	N3425V005 (U1624-3)	N3425B005 (U1624-7)
Black	N34251002 (U1626)	N34252002 (U1626-6)	N3425V002 (U1626-3)	N3425B002 (U1626-7)



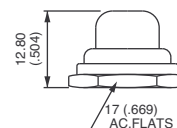
Sealing boots

For pushbutton switches

For bushing Ø 11,9-32 NS (15/32-32UNS) - 13000X778, 13000X768 and 8000-6X934 series



HEX NUT	PUSHBUTTON SILICONE BOOTS			
	Black	Red	Green	White
Nickel plated	N35211005 (U589)	N35212005 (U589-6)	N3521V005 (U589-3)	N3521B005 (U589-7)
Black	N35211002 (U590)	N35212002 (U590-6)	N3521V002 (U590-3)	-

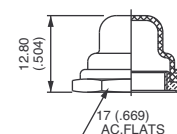


For long plunger (-9) care should be taken over the panel thickness.

For bushing Ø 12 x 0.75 SI (.472x.075 IS) - 1200, 4700 and 4800 series



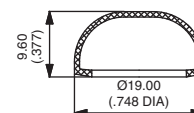
HEX NUT	PUSHBUTTON SILICONE BOOTS			
	Black	Red	Green	White
Nickel plated	N36211005 (U1654)	N36212005 (U1654-6)	N3621V005 (U1654-3)	N3621B005 (U1654-7)
Black	N36211002 (U1656)	N36212002 (U1656-6)	N3621V002 (U1656-3)	-
	PUSHBUTTON BLACK NEOPRENE BOOTS			
Nickel plated	N36216005		(U31)	
Black	N36216002		(U225)	
Chrome plated	N36216001		(U224)	



For double sealing on IC, IH, IL, IM, IP and IB-IS series



SILICONE BOOT	
Transparent	U5125
Blue	U5125-1
Black	U5125-2
Red	U5125-6

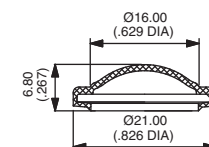


Operating temperature : -40°C to +85°C
The flat seal or O-Ring supplied with the switch should not be used with this boot.

For double sealing on IA series



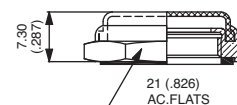
SILICONE BOOT	
Black	U6602
Green	U6603
Yellow	U6605
Red	U6606



For IZ series



HEX NUT	TRANSPARENT SILICONE BOOT
Nickel plated	N3822D005
Black	N3822D002



Panel thickness :
For models IZP and IZN, panel thickness should be 4 mm (.157).
No restriction for IZM models.

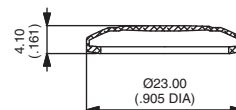
Sealing boots

For pushbutton switches or rocker switches

For AV series (models with Ø 19 mm bushing)

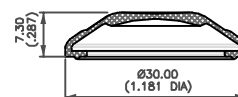


SILICONE BOOT	
Black	U2187-2
Green	U2187-3
Grey	U2187-4
Yellow	U2187-5
Red	U2187-6
White	U2187-7
Transparent	U2187-8



For FP 24mm series

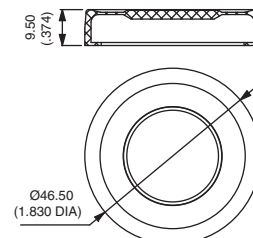
SILICONE BOOT	
Black	FP0292
Red	FP0296
Transparent	FP0298



For LPI series



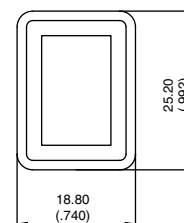
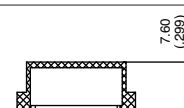
SILICONE BOOT	
Black	U3082
Transparent	U3088



For FM series



TRANSPARENT PVC BOOT	
U5720	



По вопросам продаж и поддержки обращайтесь:

Архангельск (8182)63-90-72
Астана (7172)727-132
Астрахань (8512)99-46-04
Барнаул (3852)73-04-60
Белгород (4722)40-23-64
Брянск (4832)59-03-52
Владивосток (423)249-28-31
Волгоград (844)278-03-48
Вологда (8172)26-41-59
Воронеж (473)204-51-73
Екатеринбург (343)384-55-89

Иваново (4932)77-34-06
Ижевск (3412)26-03-58
Казань (843)206-01-48
Калининград (4012)72-03-81
Калуга (4842)92-23-67
Кемерово (3842)65-04-62
Киров (8332)68-02-04
Краснодар (861)203-40-90
Красноярск (391)204-63-61
Курск (4712)77-13-04
Липецк (4742)52-20-81

Магнитогорск (3519)55-03-13
Москва (495)268-04-70
Мурманск (8152)59-64-93
Набережные Челны (8552)20-53-41
Нижний Новгород (831)429-08-12
Новокузнецк (3843)20-46-81
Новосибирск (383)227-86-73
Омск (3812)21-46-40
Орел (4862)44-53-42
Оренбург (3532)37-68-04
Пенза (8412)22-31-16

Пермь (342)205-81-47
Ростов-на-Дону (863)308-18-15
Рязань (4912)46-61-64
Самара (846)206-03-16
Санкт-Петербург (812)309-46-40
Саратов (845)249-38-78
Севастополь (8692)22-31-93
Симферополь (3652)67-13-56
Смоленск (4812)29-41-54
Сочи (862)225-72-31
Ставрополь (8652)20-65-13

Сургут (3462)77-98-35
Тверь (4822)63-31-35
Томск (3822)98-41-53
Тула (4872)74-02-29
Тюмень (3452)66-21-18
Ульяновск (8422)24-23-59
Уфа (347)229-48-12
Хабаровск (4212)92-98-04
Челябинск (351)202-03-61
Череповец (8202)49-02-64
Ярославль (4852)69-52-93

Единый адрес: amn@nt-rt.ru | <http://apem.nt-rt.ru>